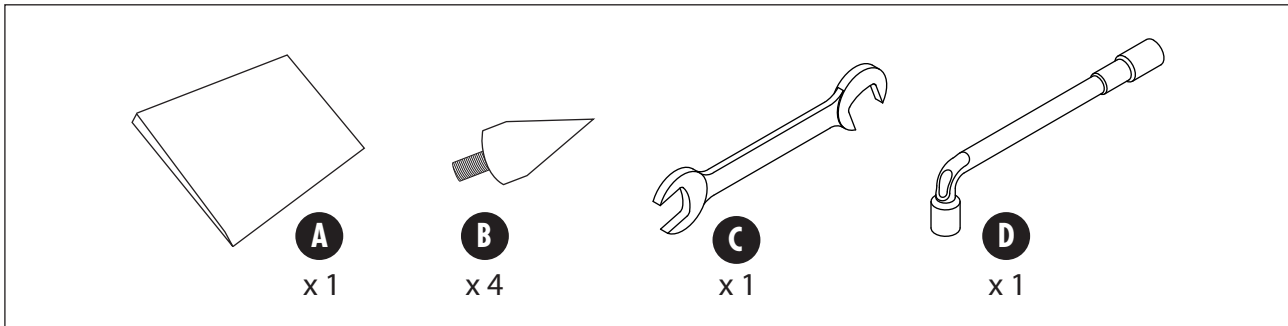


MAESTRO UTOPIA MOUNTING

MONTAGE MAESTRO UTOPIA

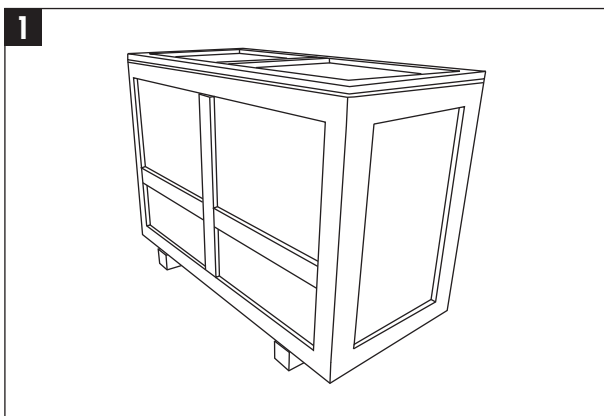
- **Accessories per speaker.**

Accessoires par enceinte.



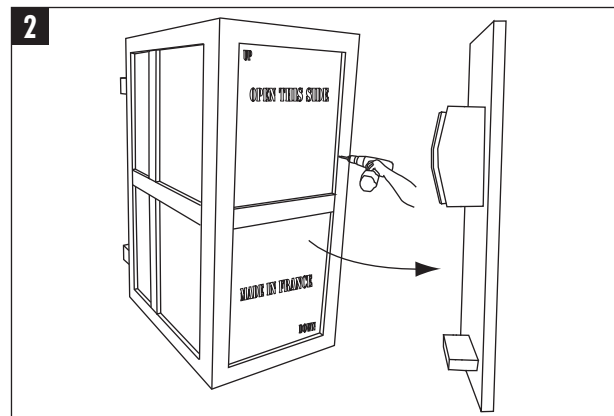
- **Unpacking procedure.**

Procédure de déballage.



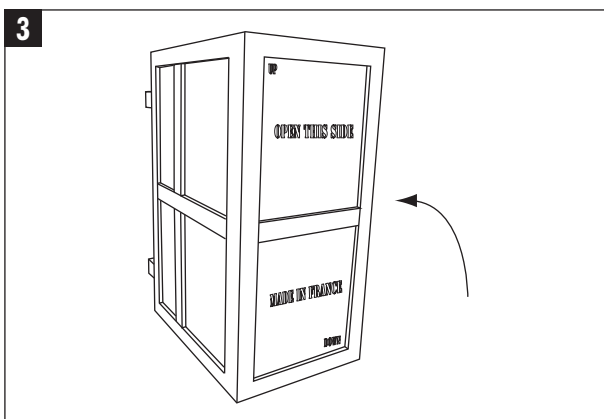
1 - Maestro Utopia 439lbs (199kg) - 4 people required.

1 - Maestro Utopia (199 kg) - 4 personnes minimum.



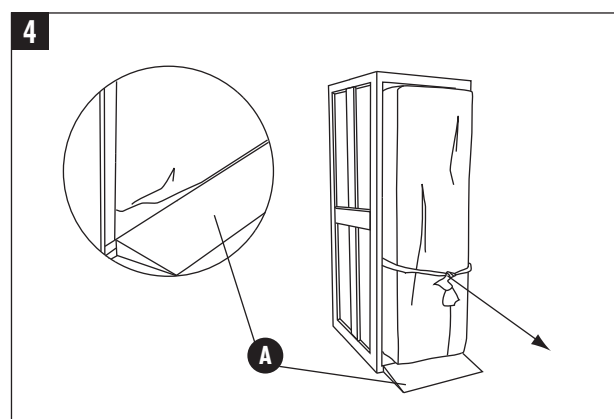
2 - Unscrew the side panel of the box and remove it.

2 - Dévissez le couvercle puis le retirer.



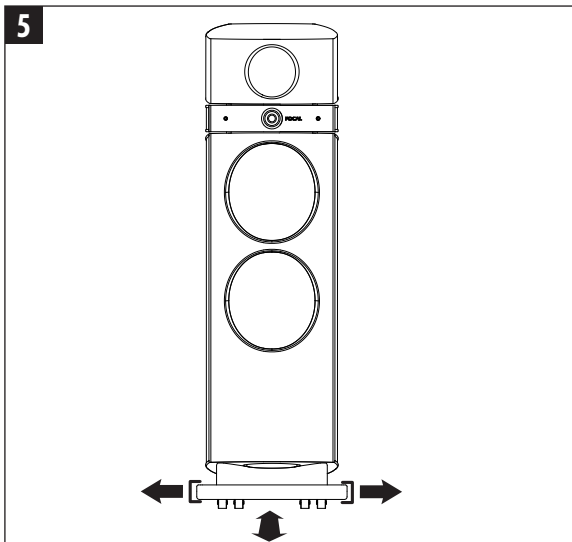
3 - Put up the box of Maestro body, being careful about the up and down sides.

3 - Redresser la caisse du corps Maestro en respectant le sens.



4 - Install the ramp as indicated. Carefully pull out the loud-speaker thanks to the girth.

4 - Disposez la rampe contre la caisse. Sortir l'enceinte en tirant sur la sangle.

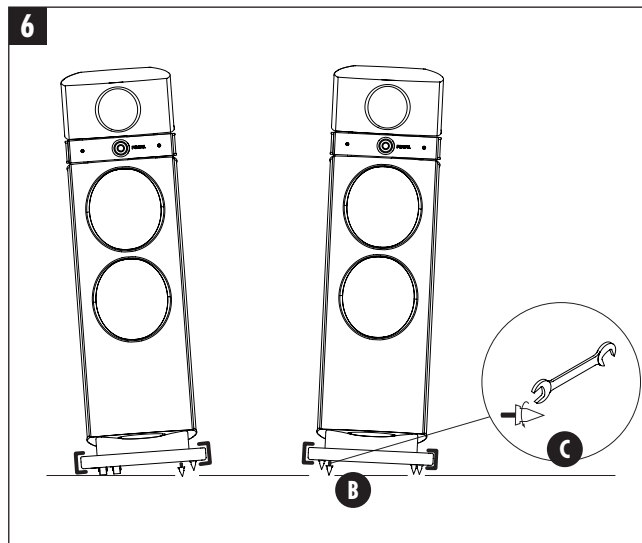


5 - You can move the Maestro to find the best place in the listening room.

Leave the protection foams in place.

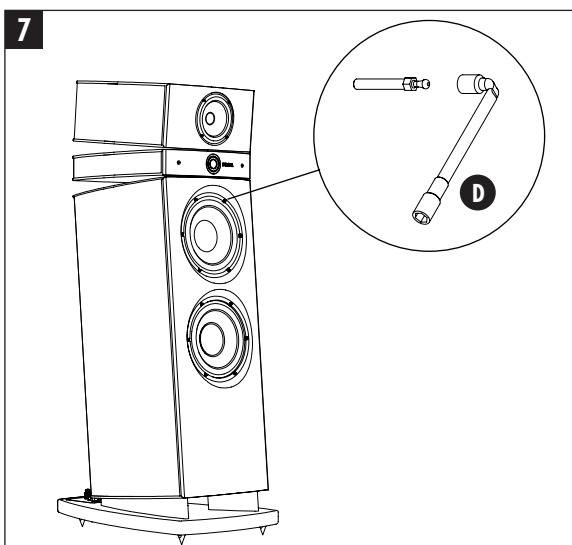
5 - Vous pouvez déplacer les Maestro pour trouver précisément la meilleure place dans le local d'écoute.

Laisser les mousses de protection en place.



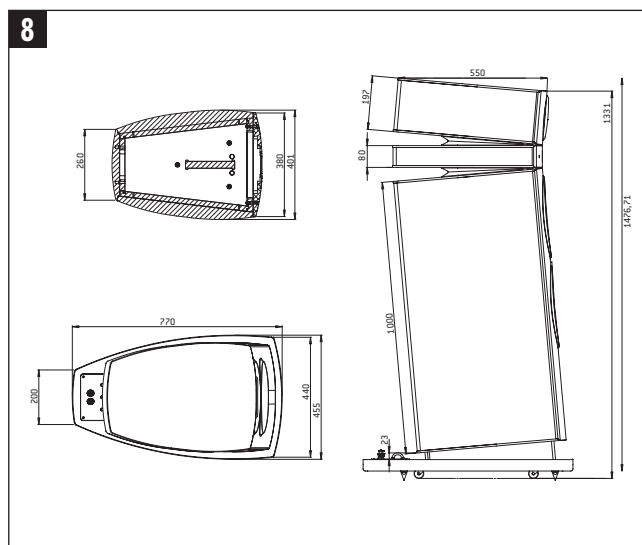
6 - Once the position is chosen, topple over the loudspeaker on its side (with the protection foams in place) to insert the spikes. You can use protection cups to protect the floor. 2 people required.

6 - Une fois la position choisie, basculez l'enceinte sur le côté (avec les housses de protection en place) pour y insérer les pointes terminales. Le cas échéant, utilisez des coupelles sous les pointes pour protéger le sol. 2 personnes minimum.



7 - For safety reasons, screw all the speaker screws (woofer and midrange) that could have been unscrewed during transport. Use the supplied tube wrench.

7 - Par sécurité, resserrer toutes les vis de haut-parleurs (woofer et médium) qui auraient pu se dévisser pendant le transport. Utiliser la clef à pipe fournie.



CE

Focal-JMlab® - BP 374 - 108, rue de l'Avenir - 42353 La Talaudière cedex - France
Tel. (+33) 04 77 43 57 00 - Fax (+33) 04 77 43 57 04 - www.focal-fr.com

Printed on recycled paper by a French printing-house certified "Imprim'Vert".
Imprimé sur papier recyclé, par une imprimerie française certifiée "Imprim'Vert".

Due to constant technological advances, Focal reserves its right to modify specifications without notice. Images may not conform exactly to specific product.

FOCAL
the Spirit of Sound

©Focal-JMlab-SCFB-090325/1 - cod01 265