


MOTORITIES COLLECTION

2023



FROM CAR
TO BOAT



For four decades, Focal has been creating unique sounding high-end speaker drivers and acoustic loudspeakers. The brand's values are innovation and performance, excellence and pleasure. We are renowned the world over for our exclusive technologies. The result of this technological heritage is sound reproduction imbued with clarity, power and a natural quality, presenting you with the best products in their category. With our Motorities Collection, we invite you to combine the pleasure of driving and sailing with the pleasure of pure sound. All aboard for some exceptional listening experiences.

01.
UTOPIA M

7



02.
K2 POWER M

13



03.
K2 POWER

19



04.
FLAX EVO

27



05.
SLATEFIBER

35



06.
POLYGLASS

41



07.
ACCESS

49



08.
UNIVERSAL

57



09.
AUDITOR

65



10.
SUBWOOFERS

73



11.
ACCESSORIES
& ELECTRONICS

79

01. UTOPIA M

Simply excellent

The quintessence of Focal expertise and cutting-edge technology, the Utopia M product line takes sound excellence to a whole new level. The specially designed chassis is a subtle mix of tradition, performance and elegance in true French style. By choosing each speaker driver in the range based on your vehicle and your needs, you can build your own audio system for a fully bespoke set-up.





'M'-shaped
'W' sandwich cone



Neodymium
magnet



Designer
bowl



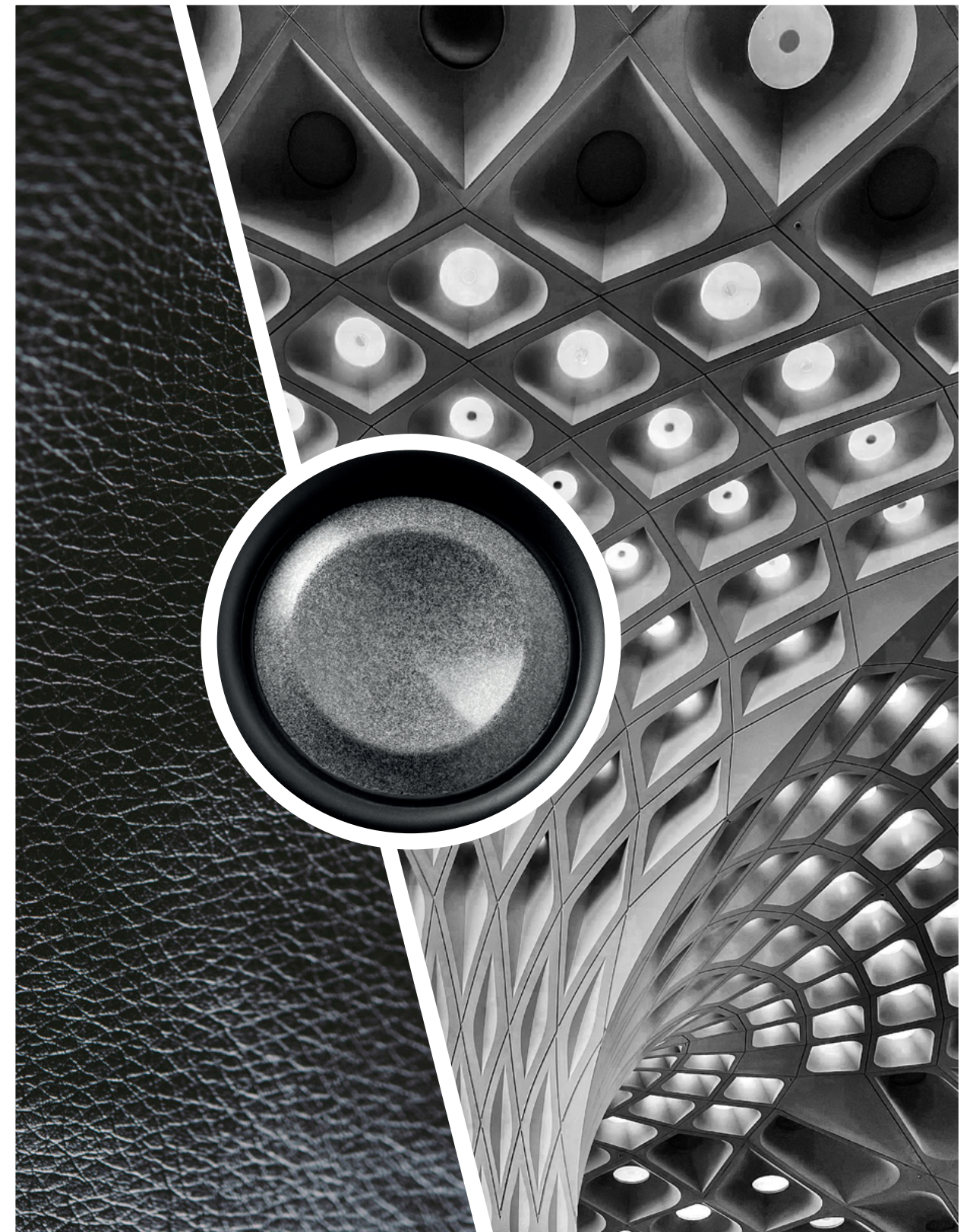
'M'-shaped Beryllium
tweeter



TMD®
surround



Elegant,
designed grille





TBM

3.5WM

6 WM

8 WM

	TBM	3.5WM	6 WM	8 WM
Type	Tweeter	Midrange	Woofers	Woofers
Diameter	-	3½" (87.5mm)	6½" (165mm)	8" (200mm)
Cone	'M'-shaped pure Beryllium dome	'M'-profile 'W'	'M'-profile 'W'	'M'-profile 'W'
Surround technology	Tuned Mass Damper (TMD®)	Tuned Mass Damper (TMD®)	Tuned Mass Damper (TMD®)	Tuned Mass Damper (TMD®)
Motor	Neodymium	Neodymium	Neodymium	Neodymium
Mounting depth	⅝" (9mm)	1¼" (31mm)	2" (51.5mm)	2⅛" (52mm)
Voice coil diameter	1" (25mm)	1¾" (45mm)	3⅞" (80mm)	3⅞" (80mm)
Impedance	4Ω	4Ω	4Ω	4Ω
Max. power	200W	100W	200W	200W
Nom. power	20W RMS	50W RMS	100W RMS	100W RMS
Sensitivity (2.83 V/1 m)	95dB	88dB	91.5dB	91.8dB
Frequency response	1,5kHz - 50kHz	200Hz - 10kHz	60Hz - 6kHz	45Hz - 5kHz
Suggested load volume	-	-	-	-
Accessories	Supplied mounting brackets	Optional grille	Optional grille	Optional grille



10WM

Type	Subwoofer
Diameter	10" (250mm)
Cone	'M'-profile 'W'
Surround technology	-
Motor	Neodymium
Mounting depth	4¼" (108mm)
Voice coil diameter	Dual voice coil 4¾" (120mm)
Impedance	2 x 4Ω
Max. power	800W
Nom. power	400W RMS
Sensitivity (2.83 V/1 m)	87.5dB
Frequency response	25Hz - 800Hz
Suggested load volume	Sealed enclosure: 0.35 to 0.52 cu ft
Accessories	-



UTOPIA PASSIVE 165 W-XP

Type	2-way component kit
Diameter	6½" (165mm)
Cone	Composite 'W' sandwich
Surround technology	Tuned Mass Damper (TMD®)
Motor	Ferrite
Mounting depth	2⅞" (74mm)
Voice coil diameter	1¼" (32mm)
Tweeter	Pure Beryllium inverted dome
Crossover	Separated: 12/18dB bi-amp
Adjustable tweeter level	+3; 0; -3dB/oct
Impedance	2Ω
Max. power	200W
Nom. power	100W RMS
Sensitivity (2.83 V/1 m)	93dB
Frequency response	60Hz - 40kHz
Accessories	Grilles included



3.5" GRILLE

Optional 'M' profile aluminium ring



6" GRILLE

Optional 'M' profile aluminium ring



8" GRILLE

Optional 'M' profile aluminium ring

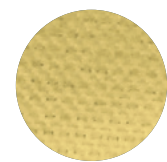
02.

K2 POWER M

The power looks good

Iconic K2 cone, 'M' profile, TMD® surround, etc.: Focal has combined several of its finest technologies to create K2 Power M. These speaker drivers are characterised by power, precision and compact design, offering unparalleled musicality and pure high-fidelity in-car sound. The brand-new FRAK tweeter brings unprecedented dynamics to your installation; it combines perfectly with the other products from the range for a unique sonic experience and 'à la carte' installation.

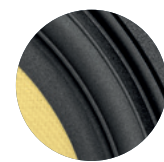




'M'-profile
K2 cone



Aluminium
frame



TMD®
surround



Neodymium
magnet



FRAK
Tweeter



'M'
grille





FRAK



3 KM



6.5 KM



SUB 5 KM

Type	Tweeter	Medium	Woofer
Diameter	1¼" (32mm)	3" (80mm)	6½" (165mm)
Cone	'M'-shaped Aluminium-Magnesium	K2 sandwich 'M'-profile	K2 sandwich 'M'-profile
Surround technology	Tuned Mass Damper (TMD*)	Tuned Mass Damper (TMD*)	Tuned Mass Damper (TMD*)
Motor	Neodymium	Neodymium	Ferrite
Mounting depth	¾" (19.5mm)	1½" (27.3mm)	2½" (54mm)
Voice coil diameter	1" (25mm)	1¾" (35mm)	2¾" (60mm)
Impedance	4Ω	4Ω	4Ω
Max. power	150W	120W	240W
Nom. power	25W RMS	60W RMS	120W RMS
Sensitivity (2.83 V/1 m)	91dB	89dB	92.5dB
Frequency response	600Hz - 32kHz	200Hz - 9kHz	50Hz - 5kHz
Suggested load volume	-	-	-
Accessories	Mounting accessories and grilles included	Optional grille	Optional grille



3" GRILLE

Optional 'M' profile aluminium ring



5" GRILLE

Optional 'M' profile aluminium ring



6.5" GRILLE

Optional 'M' profile aluminium ring

03.

K2 POWER

More than just a product, a way of life

Immerse yourself in the performance of the iconic yellow aramid fibre cone, an exclusive Focal icon of sportiness and power. Instantly recognisable, the K2 Power line delivers incredible harmonics and dynamics. Meanwhile, the subwoofers have been designed to function in very small spaces whilst providing high volume and impressive energy. Get ready to experience new emotions behind the wheel.





K2
cone



Aluminium
chassis



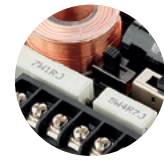
TMD®
surround



Ventilated
magnet



K2 tweeter with
'M'-shaped dome



Audiophile
crossover





EC 165 K



ES 100 K



ES 130 K

Type	2-way coaxial kit	2-way component kit	2-way component kit
Diameter	6½" (165mm)	4" (100mm)	5" (130mm)
Cone	K2 composite sandwich	K2 composite sandwich	K2 composite sandwich
Surround technology	Tuned Mass Damper (TMD®)	Tuned Mass Damper (TMD®)	Tuned Mass Damper (TMD®)
Motor	Ferrite	Neodymium	Ferrite
Mounting depth	2½" (74mm)	1½" (39mm)	2¾" (60.4mm)
Voice coil diameter	1" (25mm)	1¾" (20mm)	1" (25mm)
Tweeter	TKM ('M' profile aramid-fibre inverted dome)	TKM ('M' profile aramid-fibre inverted dome)	TKM ('M' profile aramid-fibre inverted dome)
Crossover	6dB	Separated: 12/12dB/oct	Separated: 6-12/12dB/oct
Adjustable tweeter level	-	+3; 0; -3dB/oct	+3; 0; -3dB/oct
Impedance	4Ω	4Ω	4Ω
Max. power	160W	120W	160W
Nom. power	80W RMS	60W RMS	80W RMS
Sensitivity (2.83 V/1 m)	93dB	90dB	90dB
Frequency response	60Hz - 22kHz	110Hz - 22kHz	65Hz - 22kHz
Suggested load volume	-	-	-
Accessories	Grilles included	Grilles included	Grilles included



ES 165 K



ES 165 K2

Type	2-way component kit	2-way component kit
Diameter	6½" (165mm)	6½" (165mm)
Cone	K2 composite sandwich	K2 composite sandwich
Surround technology	Tuned Mass Damper (TMD®)	Tuned Mass Damper (TMD®)
Motor	Ferrite	Ferrite
Mounting depth	2½" (74mm)	2½" (73.9mm)
Voice coil diameter	1¼" (32mm)	1¼" (32mm)
Tweeter	TKM ('M' profile aramid-fibre inverted dome)	TKM ('M' profile aramid-fibre inverted dome)
Crossover	Separated: 6-12/12dB/oct	Bi-amp separated: 6-12/12dB/oct
Adjustable tweeter level	+3; 0; -3dB/oct	+3; 0; -3dB/oct
Impedance	4Ω	2Ω
Max. power	200W	200W
Nom. power	100W RMS	100W RMS
Sensitivity (2.83 V/1 m)	90.8dB	92.8dB
Frequency response	60Hz - 22kHz	60Hz - 22kHz
Suggested load volume	-	-
Accessories	Grilles included	Grilles included



ES 165 KX2

ES 165 KX3

Type	2-way component kit	3-way component kit
Diameter	6½" (165mm)	Woofer: 6½" (165mm) Midrange: 80mm
Cone	K2 composite sandwich	K2 composite sandwich
Surround technology	Tuned Mass Damper (TMD®)	Tuned Mass Damper (TMD®)
Motor	Ferrite	Woofer: Ferrite Midrange: Neodymium
Mounting depth	3" (75.9mm)	Woofer: 3" (75.9mm) Midrange: 15/16" (33.5mm)
Voice coil diameter	1⅞" (40mm)	1⅞" (40mm)
Tweeter	TKMX ('M' profile aramid-fibre inverted dome)	TKMX ('M' profile aramid-fibre inverted dome)
Crossover	Bi-amp separated: 6-12/12-18dB/oct	Separated: 6-12/12/12dB/oct
Adjustable tweeter level	+3; 0; -3dB/oct	+3; 0; -3dB/oct
Impedance	2Ω	4Ω
Max. power	240W	240W
Nom. power	120W RMS	120W RMS
Sensitivity (2.83 V/1 m)	92,5dB	93dB
Frequency response	55Hz - 22kHz	45Hz - 22kHz
Suggested load volume	-	-
Accessories	Grilles included	Grilles included



E25 KX

E30 KX

Subwoofer	Subwoofer
10" (250mm)	12" (300mm)
K2 composite sandwich	K2 composite sandwich
-	-
Dual ferrite	Dual ferrite
6¾" (172mm)	6¾" (172mm)
2⅞" (65mm)	2⅞" (65mm)
-	-
-	-
-	-
2 x 4Ω	2 x 4Ω
1,200W	1,600W
600W RMS	800W RMS
84.5dB	86.5dB
25Hz - 500Hz	25Hz - 500Hz
Sealed enclosure: 0.6 to 0.77 cu ft Bass-reflex: 0.77 to 1.23 cu ft	Sealed enclosure: 0.99 to 1.23 cu ft Bass-reflex: 0.99 to 1.76 cu ft
-	-

04.

FLAX EVO

The perfect balance

With its French flax cone - a patented Focal exclusive - Flax Evo embodies the search for acoustic quality combined with sleek aesthetics. Sound definition, a natural midrange and deep bass are what characterise this unique range. The speaker drivers can handle high-performance amplification and can be therefore combined with any product from the Focal electronics range to provide you with a pure listening experience whilst on the go.





Flax cone



Aluminium chassis



TMD® surround



Ferrite magnet



TAM® tweeter



Audiophile crossover





PC 165 FE



PS 130 FE



PS 165 FE

Type	2-way coaxial kit	2-way component kit	2-way component kit
Diameter	6½" (165mm)	5" (130mm)	6½" (165mm)
Cone	Flax sandwich	Flax sandwich	Flax sandwich
Surround technology	Tuned Mass Damper (TMD®)	Tuned Mass Damper (TMD®)	Tuned Mass Damper (TMD®)
Motor	Ferrite	Ferrite	Ferrite
Mounting depth	2⅞" (72.7mm)	2⅞" (59.7mm)	2⅞" (72.7mm)
Voice coil diameter	1" (25mm)	1" (25mm)	1" (25mm)
Tweeter	Coaxial 'M'-profile inverted dome	TAM ('M'-profile Al/Mg inverted dome)	TAM ('M'-profile Al/Mg inverted dome)
Crossover	Integrated: 6dB/oct	Separated: 12/12dB/oct	Separated: 12/12dB/oct
Adjustable tweeter level	0/-3dB	0/-3dB	0/-3dB
Impedance	4Ω	4Ω	4Ω
Max. power	140W	120W	140W
Nom. power	70W RMS	60W RMS	70W RMS
Sensitivity (2.83 V/1 m)	90dB	90.5dB	91.5dB
Frequency response	60Hz - 28kHz	75Hz - 28kHz	60Hz - 28kHz
Accessories	Mounting accessories, screws	Mounting accessories, screws	Mounting accessories, screws



PS 165 FSE



PS 165 FXE



PS 165 F3E

Type	2-way component kit	2-way component kit	3-way component kit
Diameter	6½" (165mm)	6½" (165mm)	Woofer: 6½" (165mm) Midrange: 3⅞" (80mm)
Cone	Flax sandwich	Flax sandwich	Flax sandwich
Surround technology	Tuned Mass Damper (TMD®)	Tuned Mass Damper (TMD®)	Tuned Mass Damper (TMD®)
Motor	Ferrite	Ferrite	Ferrite
Mounting depth	2⅞" (54.5mm)	3" (77mm)	Woofer: 2⅞" (72.7mm) Midrange: 1⅝" (33.5mm)
Voice coil diameter	1¼" (32mm)	1¼" (32mm)	Woofer: 1¼" (32mm) Midrange: 1" (25mm)
Tweeter	TAM ('M'-profile Al/Mg inverted dome)	TAM ('M'-profile Al/Mg inverted dome)	TAM ('M'-profile Al/Mg inverted dome)
Crossover	Separated: 12/12dB/oct	Bi-amp separated: 12-18dB/oct	Separated: 12/12-18dB/oct
Adjustable tweeter level	0/-3dB	0/-3dB	0/-3dB
Impedance	4Ω	4Ω	4Ω
Max. power	120W	160W	160W
Nom. power	60W RMS	80W RMS	80W RMS
Sensitivity (2.83 V/1 m)	91.5dB	90.5dB	90.5dB
Frequency response	70Hz - 28kHz	55Hz - 28kHz	60Hz - 28kHz
Accessories	Mounting accessories, screws	Mounting accessories, screws	Mounting accessories, screws



P 20 FE



P 20 FSE

Type	Sealed box and bass-reflex subwoofer	Sealed box subwoofer
Diameter	8" (200mm)	8" (200mm)
Cone	Flax sandwich	Flax sandwich
Motor	Dual ferrite	Dual ferrite
Surround technology	4 ⁵ / ₈ " (117mm)	3" (76mm)
Voice coil diameter	1 ¹ / ₂ " (38mm)	1 ¹ / ₂ " (38mm)
Impedance	4Ω	4Ω
Max. power	500W	400W
Nom. power	250W RMS	200W RMS
Sensitivity (2.83 V/1 m)	82.5dB	86dB
Frequency response	39Hz - 500Hz	41Hz - 400Hz
Suggested load volume	Sealed enclosure: 0.35 to 0.52 cu ft Bass-reflex: 0.35 to 0.71 cu ft	Sealed enclosure: 0.21 to 0.32 cu ft



P 25 FE



P 25 FSE

Type	Sealed box and bass-reflex subwoofer	Sealed box subwoofer
Diameter	10" (250mm)	10" (250mm)
Cone	Flax sandwich	Flax sandwich
Motor	Dual ferrite	Dual ferrite
Surround technology	5 ⁹ / ₁₆ " (140.6mm)	3" (76mm)
Voice coil diameter	2" (50mm)	1 ¹ / ₂ " (38mm)
Impedance	4Ω	4Ω
Max. power	600W	560W
Nom. power	300W RMS	280W RMS
Sensitivity (2.83 V/1 m)	85dB	86dB
Frequency response	33Hz - 500Hz	41Hz - 400Hz
Suggested load volume	Sealed enclosure: 0.35 to 0.88 cu ft Bass-reflex: 0.88 to 1.23 cu ft	Sealed enclosure: 0.42 to 0.64 cu ft (12 to 18 l)

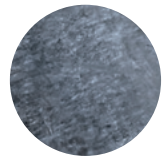
05.

SLATEFIBER

Performance personified

Versatile, accessible and high-performance, the Slatefiber line turns heads for its uncompromising efficiency. The two products are high sensitivity, so can be connected to the vehicle's original system or to an amplifier. What's more, you get meticulous French manufacturing, an exclusive Slatefiber cone, sleek design, flexible installation options and standard kit sizes to fit a wide range of vehicles.





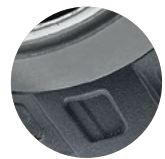
Slatefiber
cone



Rotor effect
basket



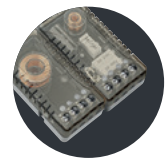
French
manufacturing



Ferrite
magnet



Aluminium
tweeter



Separable
crossovers





PC 165 SF

Type	2-way coaxial kit	PS 165 SF	2-way component kit
Diameter	6½" (165mm)	PS 165 SF	6½" (165mm)
Cone	Slatefiber	PS 165 SF	Slatefiber
Surround technology	Butyl	PS 165 SF	Butyl
Motor	Ferrite	PS 165 SF	Ferrite
Mounting depth	2¾" (70mm)	PS 165 SF	2¾" (70mm)
Voice coil diameter	1" (25mm)	PS 165 SF	1" (25mm)
Tweeter	Aluminium/Magnesium inverted dome	PS 165 SF	Aluminium/Magnesium inverted dome
Crossover	Integrated	PS 165 SF	Separable crossover: 12dB/oct
Adjustable tweeter level	-	PS 165 SF	+3/0/-3dB
Impedance	4Ω	PS 165 SF	4Ω
Max. power	160W	PS 165 SF	160W
Nom. power	80W RMS	PS 165 SF	80W RMS
Sensitivity (2.83V/1m)	91dB	PS 165 SF	91dB
Frequency response	60Hz - 21kHz	PS 165 SF	60Hz - 21kHz
Accessories	Mounting accessories, screws	PS 165 SF	Mounting accessories, screws



PS 165 SF



06.

POLYGLASS

A winning combination

Forget your current system and treat yourself to a rejuvenated sound experience with our Polyglass and Polyglass Last Edition kits that combine power, durability and compactness. This line has never stopped improving across the board, from concept to design. The subwoofers, which can be used in a sealed or bass-reflex box, make a real difference with their impactful bass. All components of the line are meticulously put together to surround passengers with warm sound.

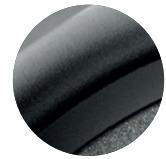




Polyglass
cone



Aluminium
chassis



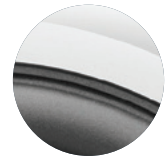
Butyl
surround



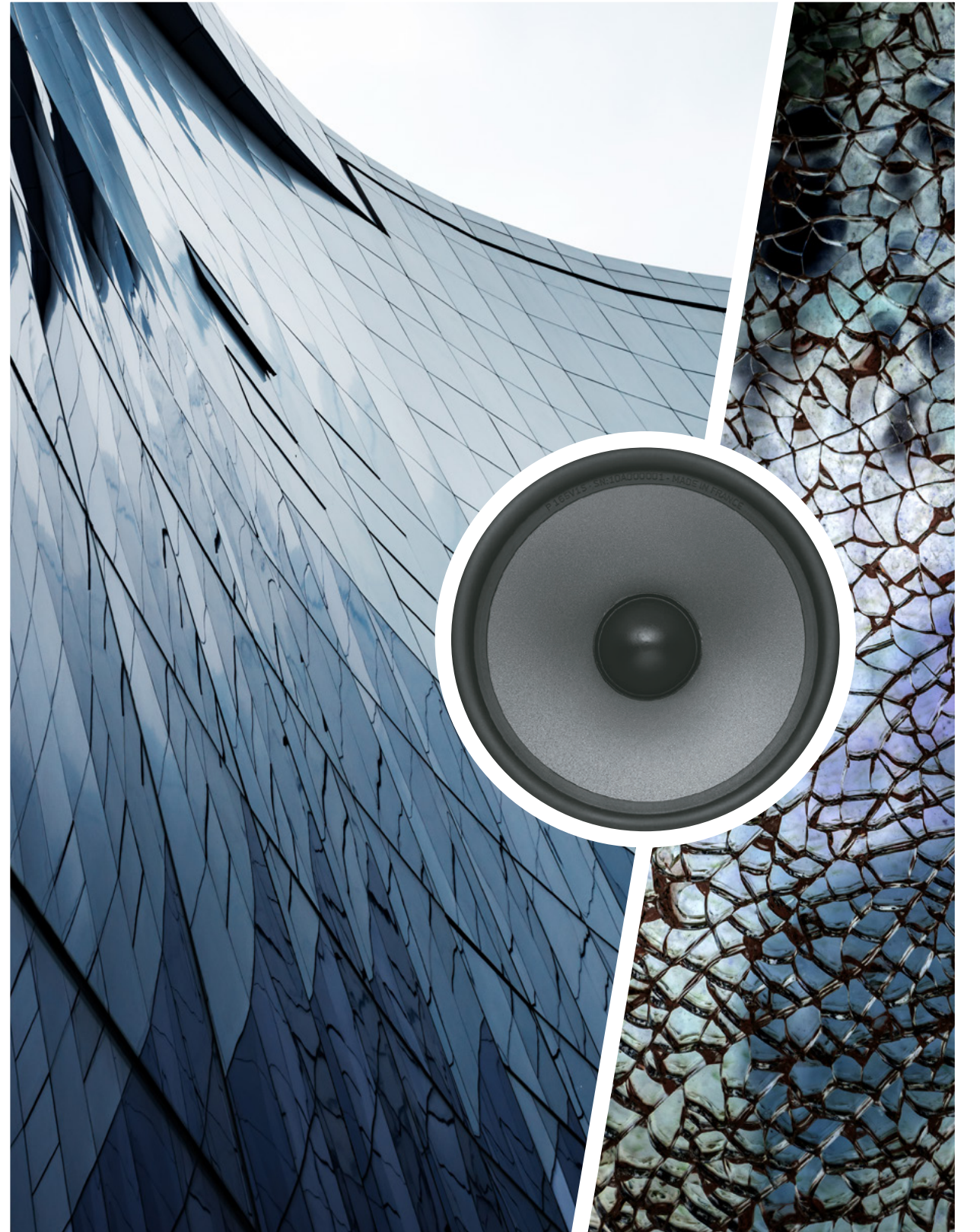
Separable
crossovers



Aluminium
tweeter



Diamond
cutting





PC 165 LAST EDITION

PS 165 LAST EDITION

Type	2-way coaxial kit	2-way component kit
Diameter	6½" (165mm)	6½" (165mm)
Cone	Polyglass	Polyglass
Motor	Ferrite	Ferrite
Mounting depth	2¼" (65.5mm)	2¼" (65.5mm)
Voice coil diameter	1" (25mm)	1" (25mm)
Tweeter	inverted dome TNP	inverted dome TNP
Crossover	Integrated: 6dB/oct	Separated: 6/12dB/oct
Adjustable tweeter level	-	+3/0/-3dB
Impedance	4Ω	4Ω
Max. power	160W	160
Nom. power	80W RMS	80W RMS
Sensitivity (2.83 V/1 m)	92.5dB	92.5dB
Frequency response	60Hz - 20kHz	60Hz - 20kHz
Accessories	Grilles included	Grilles included





PC 100

PC 130

PC 165

Type	2-way coaxial kit	2-way coaxial kit	2-way coaxial kit
Diameter	4" (100mm)	5" (130mm)	6½" (165mm)
Cone	Polyglass	Polyglass	Polyglass
Motor	Ferrite	Ferrite	Ferrite
Mounting depth	2" (51.5mm)	2¼" (56.5mm)	2⅝" (65.5mm)
Voice coil diameter	1" (25mm)	1" (25mm)	1" (25mm)
Tweeter	Rotating Aluminium inverted dome	Rotating Aluminium inverted dome	Rotating Aluminium inverted dome
Crossover	Integrated: 6dB/oct	Integrated: 6dB/oct	Integrated: 6dB/oct
Adjustable tweeter level	-	-	-
Impedance	4Ω	4Ω	4Ω
Max. power	100W	120W	160W
Nom. power	50W RMS	60W RMS	80W RMS
Sensitivity (2.83 V/1 m)	90.9dB	91.6dB	93.6dB
Frequency response	100Hz - 20kHz	80Hz - 20kHz	60Hz - 20kHz
Suggested load volume	-	-	-
Accessories	Grilles included	Grilles included	Grilles included



PS 165 V1

SUB P 25DB

SUB P 30DB

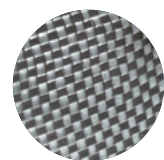
Type	2-way component kit	Subwoofer	Subwoofer
Diameter	6½" (165mm)	10" (250mm)	12" (300mm)
Cone	Polyglass	Polypropylene	Polypropylene
Motor	Ferrite	-	-
Mounting depth	2⅝" (65.5mm)	5⅞" (138.6mm)	6⅝" (160.5mm)
Voice coil diameter	1" (25mm)	Dual voice coil: 2" (50mm)	Dual voice coil: 2⅜" (60mm)
Tweeter	Aluminium inverted dome	-	-
Crossover	Separated: 6/12dB/oct	-	-
Adjustable tweeter level	+3/0/-3dB	-	-
Impedance	4Ω	4Ω	4Ω
Max. power	160W	500W	600W
Nom. power	80W RMS	250W RMS	300W RMS
Sensitivity (2.83 V/1 m)	92,5dB	90.9dB	93.4dB
Frequency response	60Hz - 20kHz	42Hz - 500Hz	27Hz - 500Hz
Suggested load volume	-	Sealed enclosure: 0.52 to 1.23 cu ft Bass-reflex: 1.23 to 2.12 cu ft	Sealed enclosure: 0.88 to 1.59 cu ft Bass-reflex: 1.23 to 2.12 cu ft
Accessories	Grilles included	-	-

07. ACCESS

Accessible Focal technology

Access invites all drivers to experience Focal innovation and quality. With its assured style and technical prowess, this line is dedicated to performance. Power handling, plunging depth of bass and razor sharp acoustics are the common denominators of the Access philosophy: we guarantee you the full Focal technology experience inside your car and a rejuvenated listening adventure.





DFS®
cone



Reinforced ABS
bowl



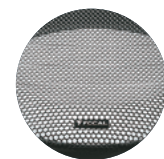
Butyl
surround



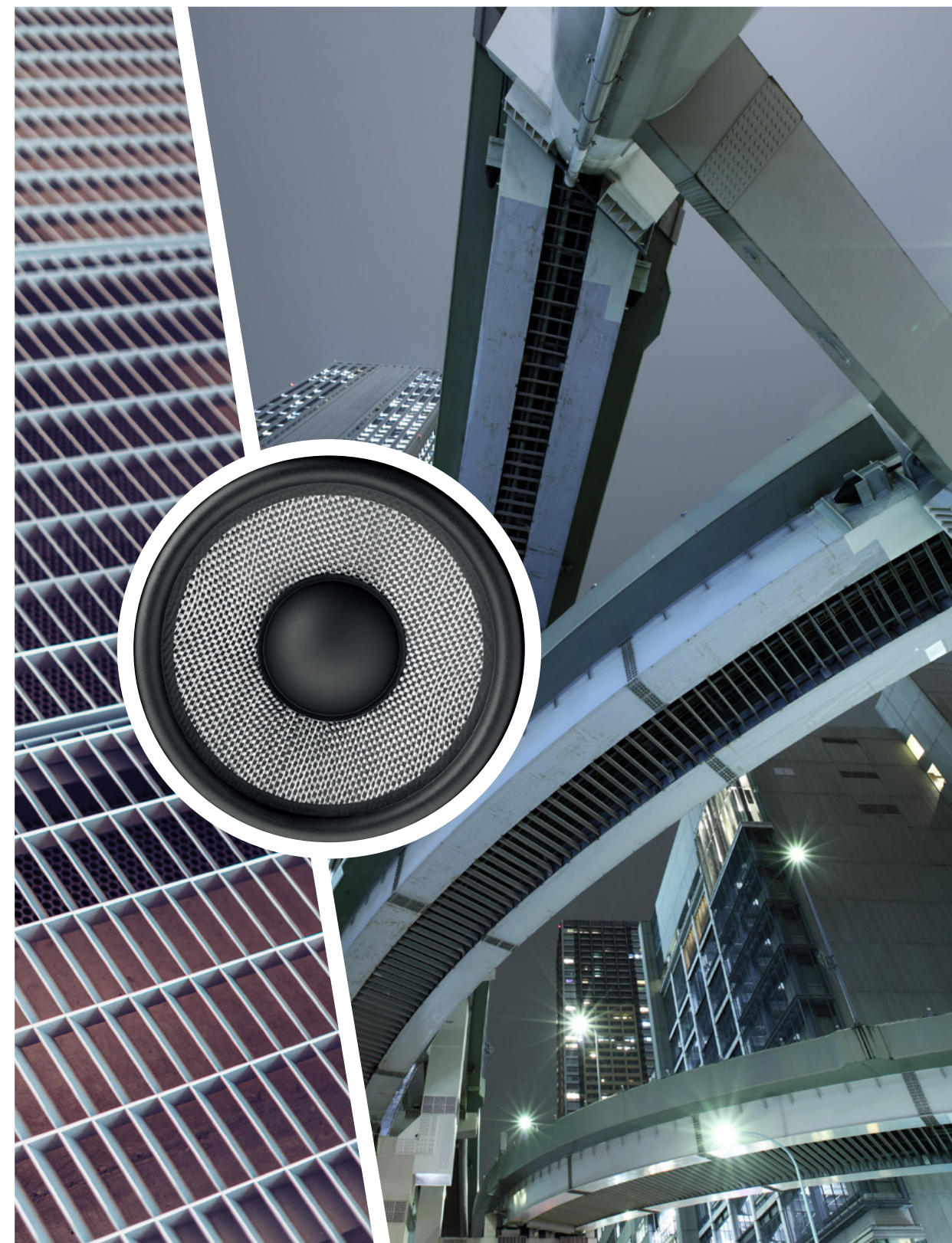
Adjustable
tweeter level



Aluminium dome
tweeter



Curved
grilles





100 AC

130 AC

165 AC

Type	2-way coaxial kit	2-way coaxial kit	2-way coaxial kit
Diameter	4" (100mm)	5" (130mm)	6½" (165mm)
Cone	DFS® (Dual Fiberglass Structure)	DFS® (Dual Fiberglass Structure)	DFS® (Dual Fiberglass Structure)
Motor	Ferrite	Ferrite	Ferrite
Mounting depth	2¼" (52.2mm)	2½" (54.7mm)	2½" (62.9mm)
Voice coil diameter	1" (25mm)	1" (25mm)	1" (25mm)
Tweeter	Rotating Aluminium inverted dome	Rotating Aluminium inverted dome	Rotating Aluminium inverted dome
Crossover	Integrated: 6dB/oct	Integrated: 6dB/oct	Integrated: 6dB/oct
Impedance	4Ω	4Ω	4Ω
Max. power	80W	100W	120W
Nom. power	40W RMS	50W RMS	60W RMS
Sensitivity (2.83 V/1 m)	87.2dB	89.3dB	91dB
Frequency response	70Hz - 20kHz	70Hz - 20kHz	60Hz - 20kHz
Accessories	Grilles included	Grilles included	Grilles included



570 AC

690 AC

Type	2-way coaxial kit	2-way coaxial kit
Diameter	5 x 7" (130 x 180 mm)	6 x 9" (164 x 235mm)
Cone	DFS® (Dual Fiberglass Structure)	DFS® (Dual Fiberglass Structure)
Motor	Ferrite	Ferrite
Mounting depth	2½" (59.5mm)	1¾" (30mm)
Voice coil diameter	1" (25mm)	1¾" (30mm)
Tweeter	Rotating Aluminium inverted dome	Rotating Aluminium inverted dome
Crossover	Integrated: 6dB/oct	Integrated: 6dB/oct
Impedance	4Ω	4Ω
Max. power	120W	150W
Nom. power	60W RMS	75W RMS
Sensitivity (2.83 V/1 m)	92.8dB	91.3dB
Frequency response	65Hz - 20kHz	50Hz - 20kHz
Accessories	Without grille	Grilles included



	130 AS	165 AS	165 AS3
Type	2-way component kit	2-way component kit	3-way component kit
Diameter	5" (130mm)	6½" (165mm)	Woofer : 6½" (165mm) Midrange : 3⅞" (80mm)
Cone	DFS® (Dual Fiberglass Structure)	DFS® (Dual Fiberglass Structure)	DFS® (Dual Fiberglass Structure)
Motor	Ferrite	Ferrite	Ferrite
Mounting depth	2⅞" (54.7mm)	2½" (62.9mm)	Woofer : 2½" (62.9mm) Midrange : 1⅞" (42.5mm)
Voice coil diameter	1" (25mm)	1" (25mm)	1" (25mm)
Tweeter	Aluminium inverted dome	Aluminium inverted dome	Aluminium inverted dome
Crossover	Separated: 12/12dB/oct (5kHz)	Separated: 12/12dB/oct (5kHz)	Separated: 6/12dB/oct (5kHz)
Adjustable tweeter level	+3; 0; -3dB/oct	+3; 0; -3dB/oct	+3; 0; -3dB/oct
Impedance	4Ω	4Ω	4Ω
Max. power	100W	120W	160W
Nom. power	50W RMS	60W RMS	80W RMS
Sensitivity (2.83 V/1 m)	90dB	91.3dB	90dB
Frequency response	65Hz - 20kHz	60Hz - 20kHz	55Hz - 20kHz
Suggested load volume	-	-	-
Accessories	Grilles included	Grilles included	Grilles included

	25 A4	30 A4
Type	Subwoofer	Subwoofer
Diameter	10" (250mm)	12" (300mm)
Cone	DFS® (Dual Fiberglass Structure)	DFS® (Dual Fiberglass Structure)
Motor	4¾" (120mm)	4¾" (120mm)
Mounting depth	5" (126.6mm)	5¾" (146.5mm)
Voice coil diameter	Simple voice coil: 2" (50mm)	Simple voice coil: 2" (50mm)
Tweeter	-	-
Crossover	-	-
Adjustable tweeter level	-	-
Impedance	4Ω	4Ω
Max. power	400W	500W
Nom. power	200W RMS	250W RMS
Sensitivity (2.83 V/1 m)	85dB	87dB
Frequency response	36Hz - 500Hz	32Hz - 500Hz
Suggested load volume	Sealed enclosure: 0.52 to 0.88 cu ft Bass-reflex: 0.71 to 1.23 cu ft	Sealed enclosure: 0.71 to 1.06 cu ft Bass-reflex: 0.88 to 1.23 cu ft
Accessories	-	-

08.

UNIVERSAL

Optimal compatibility

Enjoy the Universal line's rich sound without altering the aesthetics of your car. Special attention was paid to design and dimensions during the development stages of these products, to ensure optimal compatibility with as many different vehicles as possible. Their compactness, shallow depth and divisible fastenings make them quick and easy to fit.





Polyglass
cone



Compact
size



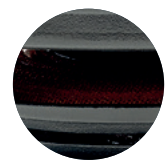
Butyl
surround



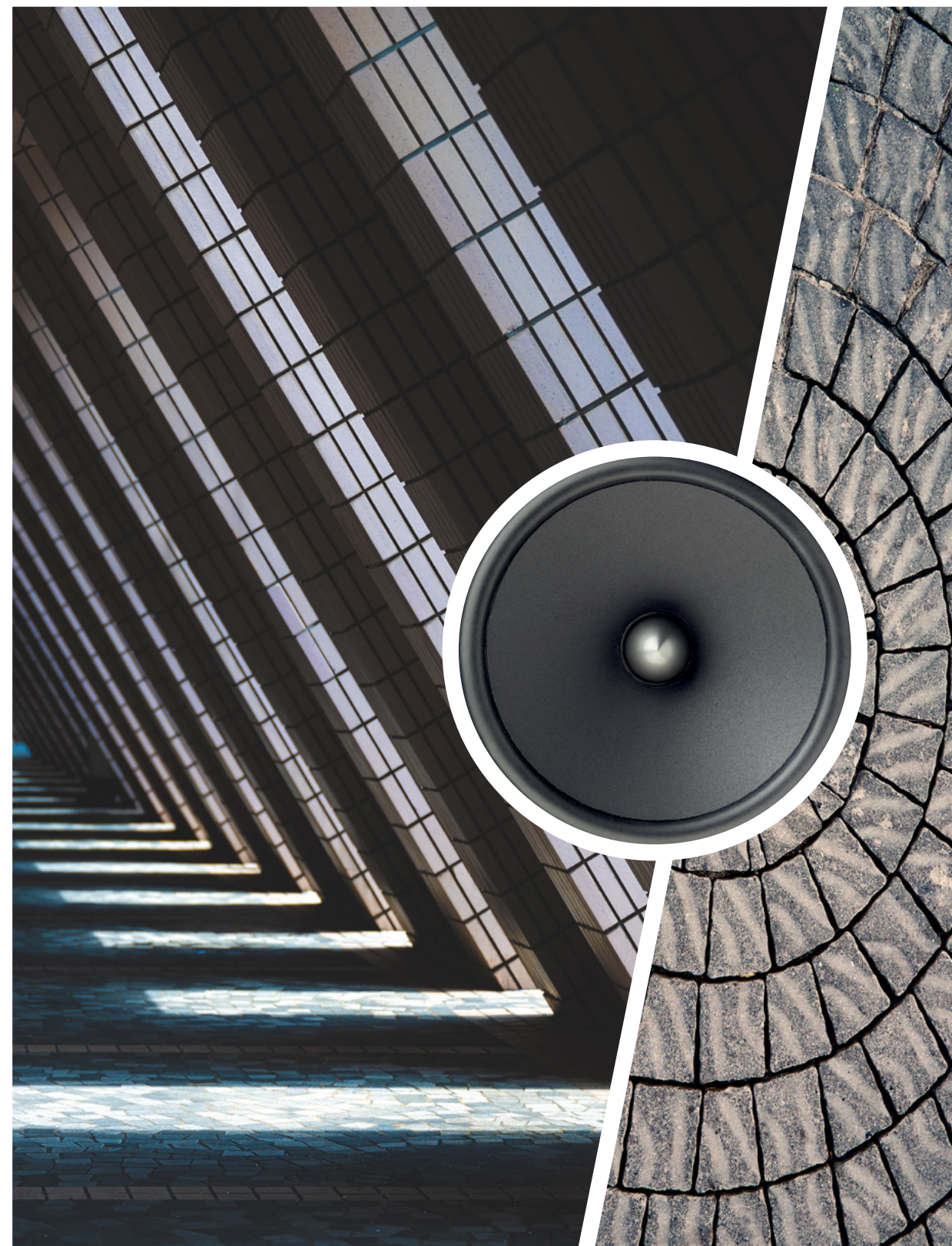
Adjustable
tweeter level



Al/Mg
tweeter



Integrated
crossover





ICU 100

ICU 130

ICU 165

Type	2-way coaxial kit	2-way coaxial kit	2-way coaxial kit
Diameter	4" (100mm)	5" (130mm)	6½" (165mm)
Cone	Polyglass	Polyglass	Polyglass
Motor	Ferrite	Ferrite	Ferrite
Mounting depth	1⅞" (49mm)	1⅞" (48.9mm)	1⅞" (48.4mm)
Voice coil diameter	1" (25mm)	1" (25mm)	1" (25mm)
Tweeter	Al/Mg inverted dome	Al/Mg inverted dome	Al/Mg inverted dome
Crossover	Integrated: 6dB/oct	Integrated: 6dB/oct	Integrated: 6dB/oct
Adjustable tweeter level	Flat / High	Flat / High	Flat / High
Impedance	4Ω	4Ω	4Ω
Max. power	80W	120W	140W
Nom. power	40W RMS	60W RMS	70W RMS
Sensitivity (2.83 V/1 m)	90.3dB	91.8dB	93dB
Frequency response	90Hz - 21kHz	90Hz - 21kHz	60Hz - 21kHz
Accessories	Without grille	Without grille	Without grille

ICU 570

ICU 690

Type	2-way coaxial kit	2-way coaxial kit
Diameter	5 x 7" (130 x 180mm)	6 x 9" (164 x 235mm)
Cone	Polyglass	Polyglass
Motor	Ferrite	Ferrite
Mounting depth	2⅝" (59.3mm)	3⅝" (83.5mm)
Voice coil diameter	1" (25mm)	1" (25mm)
Tweeter	Al/Mg inverted dome	Al/Mg inverted dome
Crossover	Integrated: 6dB/oct	Integrated: 6dB/oct
Adjustable tweeter level	Flat / High	Flat / High
Impedance	4Ω	4Ω
Max. power	140W	160W
Nom. power	70W RMS	80W RMS
Sensitivity (2.83 V/1 m)	94dB	93.6dB
Frequency response	60Hz - 21kHz	55Hz - 21kHz
Accessories	Without grille	Without grille



ISU 130

ISU 165

ISU 200

ISU 690

TWU 1.5

Type	2-way component kit	2-way component kit	2-way component kit
Diameter	5" (130mm)	6½" (165mm)	8" (230mm)
Cone	Polyglass	Polyglass	Polyglass
Motor	Ferrite	Ferrite	Ferrite
Mounting depth	1⅞" (48.9mm)	1⅞" (48.4mm)	2½" (63.5mm)
Voice coil diameter	1" (25mm)	1" (25mm)	1" (25mm)
Tweeter	Al/Mg inverted dome	Al/Mg inverted dome	Al/Mg inverted dome
Crossover	Integrated (connectors): 6dB/oct	Integrated (connectors): 6dB/oct	Integrated (connectors): 6dB/oct
Impedance	4Ω	4Ω	4Ω
Max. power	120W	140W	160W
Nom. power	60W RMS	70W RMS	80W RMS
Sensitivity (2.83 V/1 m)	91.8dB	93dB	93dB
Frequency response	90Hz - 21kHz	60Hz - 21kHz	40Hz - 21kHz
Accessories	Tweeter support Crossovers in line on connectors Supplied without grille	Tweeter support Crossovers in line on connectors Supplied without grille	Tweeter support Crossovers in line on connectors Supplied without grille

Type	2-way component kit	Tweeter
Diameter	6 x 9" (164 x 235mm)	1⅝" (49.4mm)
Cone	Polyglass	Al/Mg inverted dome
Motor	Ferrite	Neodymium
Mounting depth	3⅝" (83.5mm)	1¼" (16.8mm)
Voice coil diameter	1" (25mm)	1⅜" (20mm)
Tweeter	Al/Mg inverted dome	-
Crossover	Integrated (connectors): 6dB/oct	Integrated: 6dB/oct
Impedance	4Ω	4Ω
Max. power	160W	100W
Nom. power	80W RMS	15W RMS
Sensitivity (2.83 V/1 m)	93,6dB	94dB
Frequency response	55Hz - 21kHz	4kHz - 21kHz
Accessories	Tweeter support Crossovers in line on connectors Supplied without grille	4 possibilities: "Flush", surface, tilted mounting, in factory location

09. AUDITOR

Your Focal installation debut

With Auditor, treat yourself to a high-quality Focal audio system at a very competitive price. This range of nine versatile kits provides a system with guaranteed efficiency, performance and power. Combined with dedicated electronics or connected to the vehicle's original amplifier, these component, coaxial and elliptical coaxial kits significantly improve the on-board audio. These products benefit from all of Focal's expertise to help you rediscover the pleasure of driving to music!

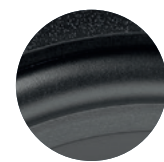




Polypropylene
cone



Steel
bowl



'U'-shaped
surround



Black lacquered
tweeter finish



Mylar Inverted
dome tweeter



ABS & Mesh
grille





ACX 100

ACX 130

ACX 165

Type	2-way coaxial kit	2-way coaxial kit	2-way coaxial kit
Diameter	4" (100mm)	5" (130mm)	6½" (165mm)
Cone	Polypropylene	Polypropylene	Polypropylene
Motor	Ferrite	Ferrite	Ferrite
Mounting depth	1⅞" (48.2mm)	2⅞" (55mm)	2⅞" (62.5mm)
Voice coil diameter	1" (25mm)	1" (25mm)	1" (25mm)
Tweeter	Inverted dome	Inverted dome	Inverted dome
Crossover	6dB/oct	6dB/oct	6dB/oct
Impedance	4Ω	4Ω	4Ω
Max. power	60W	100W	120W
Nom. power	30W RMS	50W RMS	60W RMS
Sensitivity (2.83 V/1 m)	88dB	90dB	91.5dB
Frequency response	80Hz - 21kHz	65Hz - 21kHz	60Hz - 21kHz
Accessories	Supplied with grilles, fastening and screws	Supplied with grilles, fastening and screws	Supplied with grilles, fastening and screws



ACX 165 S

ACX 570

ACX 690

Type	2-way shallow coaxial kit	2-way coaxial elliptic kit	3-way coaxial elliptic kit
Diameter	6½" (165mm)	5 x 7" (130 x 180mm)	6 x 9" (164 x 235mm)
Cone	Polypropylene	Polypropylene	Polypropylene
Motor	Ferrite	Ferrite	Ferrite
Mounting depth	1⅞" (48.5mm)	2⅞" (59.5mm)	3⅞" (78mm)
Voice coil diameter	1" (25mm)	1" (25mm)	1⅜" (35mm)
Tweeter	Inverted dome	Inverted dome	Inverted dome tweeter/midrange
Crossover	6dB/oct	6dB/oct	6dB/oct
Impedance	4Ω	4Ω	4Ω
Max. power	110W	120W	160W
Nom. power	55W RMS	60W RMS	80W RMS
Sensitivity (2.83 V/1 m)	91dB	91.6dB	92dB
Frequency response	60Hz - 21kHz	60Hz - 21kHz	50Hz - 20kHz
Accessories	Supplied with grilles, fastening and screws	Supplied with grilles, fastening and screws	Supplied with grilles, fastening and screws



ASE 130

Type	2-way component kit
Diameter	5" (130mm)
Cone	Polypropylene
Motor	Ferrite
Mounting depth	2½" (55.5mm)
Voice coil diameter	1" (25mm)
Tweeter	Inverted dome
Crossover	Separated pre-wired: 12dB/oct
Impedance	4Ω
Max. power	100W
Nom. power	50W RMS
Sensitivity (2.83 V/1 m)	90dB
Frequency response	65Hz - 21kHz
Accessories	Supplied with grilles, fastening and screws



ASE 165

Type	2-way component kit
Diameter	6½" (165mm)
Cone	Polypropylene
Motor	Ferrite
Mounting depth	2¾" (62.5mm)
Voice coil diameter	1" (25mm)
Tweeter	Inverted dome
Crossover	Separated pre-wired: 12dB/oct
Impedance	4Ω
Max. power	120W
Nom. power	60W RMS
Sensitivity (2.83 V/1 m)	91.5dB
Frequency response	60Hz - 21kHz
Accessories	Supplied with grilles, blinding and screws



ASE 165 S

Type	2-way shallow component kit
Diameter	6½" (165mm)
Cone	Polypropylene
Motor	Ferrite
Mounting depth	1⅞" (48.5mm)
Voice coil diameter	1" (25mm)
Tweeter	Inverted dome
Crossover	Separated pre-wired: 12dB/oct
Impedance	4Ω
Max. power	110W
Nom. power	55W RMS
Sensitivity (2.83 V/1 m)	91dB
Frequency response	60Hz - 21kHz
Accessories	Supplied with grilles, blinding and screws



AP 4340

Type	Class AB Amplifier 4/3/2 channels RCA inputs
CEA Power (4Ω)	4 x 70W RMS
Max. power (2Ω)	4 x 95W RMS
Max. power (bridged 4Ω)	2 x 190W RMS
Crossovers	High-Pass (channel 1-2): 60Hz - 1.2kHz High-Pass (channel 3-4): 100Hz-2.2kHz Low-Pass : 50 - 250Hz
Functions	Full Range
Dimensions (DxWxH)	13¾ x 2 x 9¼" (340 x 50 x 235mm)

10. SUBWOOFERS

For powerful, boosted bass, choose Focal's range of subwoofers (passive, active, bass-reflex, slim...). They meet all installation requirements thanks to their performance, the range of different sizes available and how compact they are. Compatible with all of our Motorities products, these subwoofers enjoys all the knowledge and savoir-faire that Focal provides to bring you ultimate listening pleasure in the car.





SUB 10



SUB 10 DUAL



SUB 10 SLIM

Type	Bass-reflex subwoofer	Bass-reflex subwoofer	Subwoofer
Diameter	10" (25cm)	10" (25cm)	10" (25cm)
Cone	Polypropylene	Polypropylene	Polypropylene
Motor	Ferrite	Ferrite	Ferrite
Surround technology	Butyl	Butyl	Butyl
Voice coil diameter	2" (50mm)	2" (50mm)	1" (20mm)
Impedance	4Ω	4Ω + 4Ω	4Ω
Max. power	500W	500W	460W
Nom. power	250W RMS	250W RMS	230W RMS
Sensitivity (2.83 V/1 m)	85dB	85dB	85dB
Frequency response	35Hz - 500kHz	32Hz - 500kHz	39Hz - 500kHz
Suggested load volume	Sealed enclosure : 0.35 to 0.88 cu ft Bass-reflex : 0.88 to 1.23 cu ft	Sealed enclosure : 0.35 to 0.88 cu ft Bass-reflex : 0.88 to 1.41 cu ft	Sealed enclosure : 0.35 to 0.88 cu ft



SUB 12



SUB 12 DUAL



SUB 12 SLIM

Type	Bass-reflex subwoofer	Bass-reflex subwoofer	Subwoofer
Diameter	12" (30cm)	12" (30cm)	12" (30cm)
Cone	Polypropylene	Polypropylene	Polypropylene
Motor	Ferrite	Ferrite	Ferrite
Surround technology	Butyl	Butyl	Butyl
Voice coil diameter	2" (50mm)	2" (50mm)	1" (20mm)
Impedance	4Ω	4Ω + 4Ω	4Ω
Max. power	600W	600W	560W
Nom. power	300W RMS	300W RMS	280W RMS
Sensitivity (2.83 V/1 m)	88dB	88dB	87dB
Frequency response	30Hz - 500kHz	29Hz - 50kHz	35Hz - 500kHz
Suggested load volume	Sealed enclosure : 0.53 to 1.06 Bass-reflex : 1.06 to 1.23 cu ft	Sealed enclosure : 0.53 to 1.06 cu ft Bass-reflex : 1.06 to 1.23 cu ft	Sealed enclosure : 0.53 to 1.06 cu ft



BOMBA BP 20



IBUS 2.0



IBUS 2.1

Type	Compact active subwoofer enclosure Class D amplifier High and low level audio input (OEM and aftermarket head units compatibility)	Active enclosure with subwoofer	Active enclosure with subwoofer True 2.1 system 1 amplifier for the subwoofer 1 amplifier for the front channel very high power
Woofers diameter	8" (200mm)	8" (200mm)	8" (200mm)
Impedance	-	-	-
Sub max. power	300W	150W	150W
Sub nom. power	150W RMS	75W RMS	75W RMS
Sensitivity (2.83V/1m)	-	-	-
Frequency response	20Hz - 125Hz	45Hz - 150Hz	45Hz - 150Hz
Speaker max. power	-	-	2 x 110W RMS
Speaker nom. power	-	-	2 x 55W RMS
Function	Bandpass technology Phase selector : 0 - 180° Adjustable frequency cut off : 45Hz - 120Hz	High-level inputs Autopower ON	High-level inputs Autopower ON Amplification 2 front channels
Accessories	-	Remote & <i>Plug & Play</i> wiring	Remote & <i>Plug & Play</i> wiring
Weight	24.4lbs (11kg)	11.1lbs (5kg)	11.3lbs (5.1kg)
Dimensions (HxLxP)	17 ³ / ₁₆ x 9 ¹³ / ₁₆ x 12 ¹¹ / ₁₆ " (249 x 439 x 323mm)	21 ³ / ₁₆ x 13 ⁹ / ₁₆ x 9 ¹³ / ₁₆ " (71.5 x 344 x 250mm)	21 ³ / ₁₆ x 13 ⁹ / ₁₆ x 9 ¹³ / ₁₆ " (71.5 x 344 x 250mm)



PSB 200



ISUB TWIN

Type	Compact passive subwoofer enclosure	Underseat passive subwoofers
Woofers diameter	8" (200mm)	-
Impedance	4Ω	2Ω
Sub max. power	250W	2 x 200W
Sub nom. power	150W RMS	2 x 100W RMS
Sensitivity (2.83V/1m)	83dB	83dB
Frequency response	45Hz - 150Hz	50 - 150Hz
Speaker max. power	-	-
Speaker nom. power	-	-
Function	-	-
Accessories	Screws, fixation system	Fixation system
Weight	15.7lbs (7kg)	2 x 6lbs (2 x 2.7kg)
Dimensions (HxLxP)	19 ¹ / ₄ x 4 ⁵ / ₁₆ x 12" (109 x 489 x 304mm)	10 ¹ / ₄ x 9 ¹ / ₂ x 3 ¹ / ₈ " (260 x 240 x 80mm)



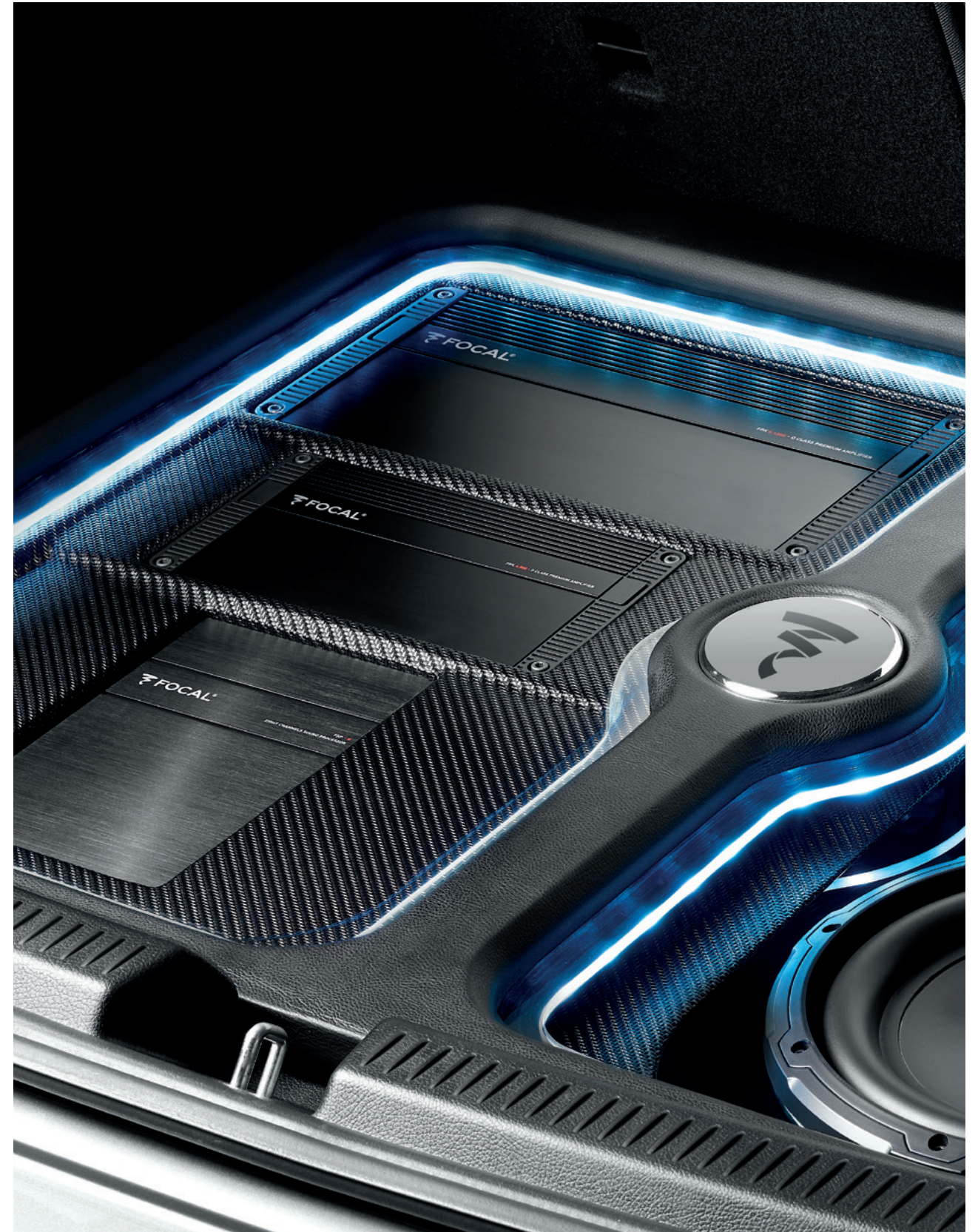
Supplied with cables

IY BUS

Only one remote to control the sound level of the two Ibus enclosures (Ibus 2.0/2.1)

11. ACCESSORIES & ELECTRONICS

In combination with and as a complement to our installations, we offer a range of amplifiers and cables so you can enjoy an all-round solution. To experience the sensations of a precise, controlled and stable sound, Focal electronics have it all. Last but not least, our cables play a vital role in the audio architecture, answering all your amplification questions and optimising the connections between components.





FPX 5.1200

FPX 4.400 SQ

FPX 4.800

Type	Premium Class D Amplifier 5 channels	Premium Class AB Amplifier 4/3/2 channels Sound Quality	Premium Class D Amplifier 4/3/2 channels
CEA Power (4Ω)	4 x 75W RMS + 1 x 420W RMS	4 x 70W RMS	4 x 120W RMS
Max. power (2Ω)	4 x 120W RMS + 1 x 720W RMS	4 x 100W RMS	4 x 185W RMS
Max. power (1Ω)	-	-	-
Max. power (bridged 4Ω)	2 x 240W RMS + 720W RMS	2 x 200W RMS	2 x 370W RMS
Crossovers	Configurable High-Pass / Low-Pass: 50Hz - 500Hz	Configurable High-Pass / Low-Pass: 50Hz - 5 000Hz	Configurable High-Pass / Low-Pass: 50Hz - 500Hz
Copy mode	6CH/4CH/2CH	4CH/2CH	4CH/2CH
Functions	Full range Mode Bass Boost Subsonic filter	Full Range	Full Range
Phase adjustment	Yes	-	-
Protections	Short circuit / Over-current / Reverse polarity / DC / Voltage drop / Heat protection	Short circuit / Over-current / Reverse polarity / DC / Voltage drop / Heat protection	Short circuit / Over-current / Reverse polarity / DC / Voltage drop / Heat protection
Accessories	Remote control, screws, fuses	Screws, fuses, terminal board tools	Screws, fuses, terminal board tools
Weight	9lbs (4.1kg)	8.2lbs (3.7kg)	4.4lbs (2kg)
Dimensions (DxWxH)	11 ³ / ₁₆ x 6 ⁷ / ₈ x 2 ¹ / ₄ " (300 x 175 x 57mm)	12 ³ / ₈ x 6 ⁷ / ₈ x 2 ¹ / ₄ " (314 x 175 x 57mm)	9 ⁵ / ₁₆ x 5 ³ / ₁₆ x 2 ¹ / ₁₆ " (237 x 132 x 53mm)



FPX 1.1000

Type	Premium Class D Amplifier Mono
CEA Power (4Ω)	1 x 420W RMS
Max. power (2Ω)	1 x 700W RMS
Max. power (1Ω)	1 x 1000W RMS
Max. power (bridged 4Ω)	-
Crossovers	Configurable Low-Pass: 50Hz - 250Hz
Copy mode	-
Functions	Bass Boost (6/12dB) Crossover subsonic (10Hz - 50Hz)
Phase adjustment	Progressive
Protections	Short circuit / Over-current / Reverse polarity / DC / Voltage drop / Heat protection
Accessories	Remote control, screws, fuses, terminal board tools
Weight	5.6lbs (2.55kg)
Dimensions (DxWxH)	11 ¹ / ₁₆ x 5 ³ / ₁₆ x 2 ¹ / ₁₆ " (297 x 132 x 53mm)



FDS 4.350

Type	Class D Amplifier 4/3/2 channels	Class D Amplifier Mono - RCA low-level inputs
CEA Power (4Ω)	4 x 58W RMS	1 x 210W RMS
Max. power (2Ω)	4 x 100W RMS	1 x 350W RMS
Max. power (1Ω)	-	-
Max. power (bridged 4Ω)	2 x 200W RMS	-
Crossovers	Configurable High-Pass / Low-Pass: 40Hz - 400Hz	Low-Pass: 40Hz - 400Hz
Copy mode	-	-
Functions	Full Range	Bass Boost (0/6dB / 12dB)
Phase adjustment	-	Progressive (0 - 180°)
Protections	Short circuit / Over-current / Reverse polarity / DC / Voltage drop / Heat protection	Short circuit / Over-current / Reverse polarity / DC / Voltage drop / Heat protection
Accessories	Screws, fuses	Screws, fuses
Weight	1.9lbs (850g)	1.9lbs (850g)
Dimensions (DxWxH)	7 ¹ / ₁₆ x 4 ¹ / ₄ x 1 ¹ / ₁₆ " (199 x 108 x 43mm)	7 ¹ / ₁₆ x 4 ¹ / ₄ x 1 ¹ / ₁₆ " (199 x 108 x 43mm)



FDS 1.350



FSP-8

Type	8-channel sound processor
Inputs	Selectable high/low-level inputs for compatibility with factory or after-market head units High-resolution digital input (24 bits/192kHz) Auxiliary stereo input
Max output (with 10 kΩ)	3.4V
Frequency response	Digital crossover OFF/-3 dB: 5Hz - 21kHz
Signal/Noise ratio	-90dBA (analog input) -99dBA (optical)
Distortion - 10 kΩ - @ 1kHz (with 22kHz Low-Pass filter)	0.02 %
Accessoires	Remote control with LED screen (sold separately)
Dimensions (DxHxW)	5 ⁵ / ₁₆ "x8 ⁹ / ₁₆ "x1 ⁷ / ₈ " (135 x 218 x 48mm)



FSP-8 REMOTE CONTROL

Enables you to control the main functions of the FSP-8:
Adjust overall gain, subwoofer volume, and input selection for the FSP-8
Reminds you of the stored pre-sets
Notched knob LED backlit screen



LOGICIEL FOCAL FSP-8 MANAGER

PC compatibility: Windows XP/Vista/Seven/8/10
Simplified set-up and dynamic help
Equalizer: 10 bands, fully customisable for every single channel
High-pass/low-pass filter/bandpass control: 16Hz - 20kHz
Delay adjustment range: 0-22ms per channel
Delay adjustment incrementation: 0.1ms
Phase inverter



IMPULSE 4.320

Type	Class D ultra-compact Amplifier - 4/3/2 channels
CEA power (4Ω)	4 x 55W RMS
Max. power (2Ω)	4 x 80W RMS
Max. power (4Ω bridged)	2 x 160W RMS
Crossovers	Activable/deactivable fixed at 75Hz on channels 1/2 Configurable from 40Hz-200Hz on channels 3/4
Copy Mode	4 CH/2CH
Setting	Adjustable phase on channels 3/4
Protections	Short circuit / Over-current / Reverse polarity / DC / Voltage drop / Heat protection
Weight	1.2lbs (550g)
Dimensions (LxHxD)	6 ⁷ / ₈ x 1 ⁷ / ₈ x 2 ⁵ / ₈ " (175 x 47 x 66.5mm)



IY - AC IMPULSE 4.320

Adapter Y cable
Focal Impulse 4.320



HILO V3

Type	High-level to RCA line stereo converter
Function	Converts a stereo amplified signal in two low-level line outputs for an amplifier DC and AC detection modes Automatic remote output Speaker simulation network to avoid head-unit muting
Bandwith (+/-1dB)	10Hz - 140kHz
Signal/Noise ratio	100dB
Distorsion	< 0.01 %



ER 1

RCA cable 1 x 1m (3.3ft)



ER 3

RCA cable 1 x 3m (9.9ft)



ER 5

RCA cable 1 x 5m (16.4ft)



EY 05

RCA cable 2 x 0.5m (2 x 1.64ft)



ES 15

1 roll: 15 AWG
12m x 1.5mm² (39ft)



ES 25

1 roll: 13 AWG
12m x 2.5mm² (39ft)



ES 4

1 roll: 11 AWG
12m x 4mm² (39ft)



PR 5

RCA cable 5m (16.4ft)
Male/male plugs

2 x 90° bent plugs
for difficult locations



PS 15

Flat speaker cable
15 AWG/1.5mm²
1 roll: 39ftx15 AWG (12m x 1.5mm²)

High performances,
easy to install
Soft touch insulant



PS 25

Flat speaker cable
13 AWG/2.5mm²
Roll: 39 ft x 13 AWG (12m x 2.5mm²)

High performances,
easy to install
Soft touch insulant



PK 8

8 AWG
Complete supply kit (amplifier/speakers)
16ft (4.9m) supply cable (8.3mm²)
3.3ft (1m) ground cable (8.3mm²)
32.8ft (10m) speaker cable
16.4ft (5m) remote cable1
6.4ft (5m) RCA cable (2x90° bent plugs and 2 straight plugs)
60A fuse-box
Accessory pack



PK 21

4 AWG
Complete supply kit (amplifier/speakers)
16ft (4.9m) supply cable (21mm²)
3.3ft (1m) ground cable (21mm²)
32.8ft (10m) speaker cable
16.4ft (5m) remote cable
16.4ft (5m) RCA cable (2x90° bent plugs and 2 straight plugs)
80A fuse-box
Accessory pack



B.A.M XXXL

1 roll of 19¹¹/₁₆ x 236¹/₄" (50 x 600cm) (3m²)



B.A.M XL

1 sheet 19¹¹/₁₆ x 78³/₄" (50x200cm) (1m²)



TOOL SET

Set of 11 composite tools
to remove door panel



UTOPIA M



K2 POWER



COLLECTIONS

Combining performance and design, Focal's collections are a revelation, awakening the emotions : at home with hi-fi and in-wall/in-ceiling loudspeakers, Home Cinema systems and open-/closed-back headphones; on the go with incar kits; during travel with Bluetooth® Noise Cancelling Headphones; in the studio with monitors; for outdoor spaces and at sea with specialist yacht solutions.



Home Collection



Motorities Collection



Professional Collection

FOCAL *Powered by* naim

Enjoy an incredible sound experience

Find our products in 10,000 retail partner stores across the world, but also in our Focal Powered by Naim shops. These shops, dedicated to our brands, invite you to dive into our world, our savoir-faire and immerse yourself in the Focal & Naim sound.

ASIA

Beijing - Bengaluru
Dubai - Guangzhou
Seoul Gangnam-gu
Seoul Hanam
Taipei

AUSTRALIA

Adélaide - Melbourne
Perth - Sydney

EUROPE

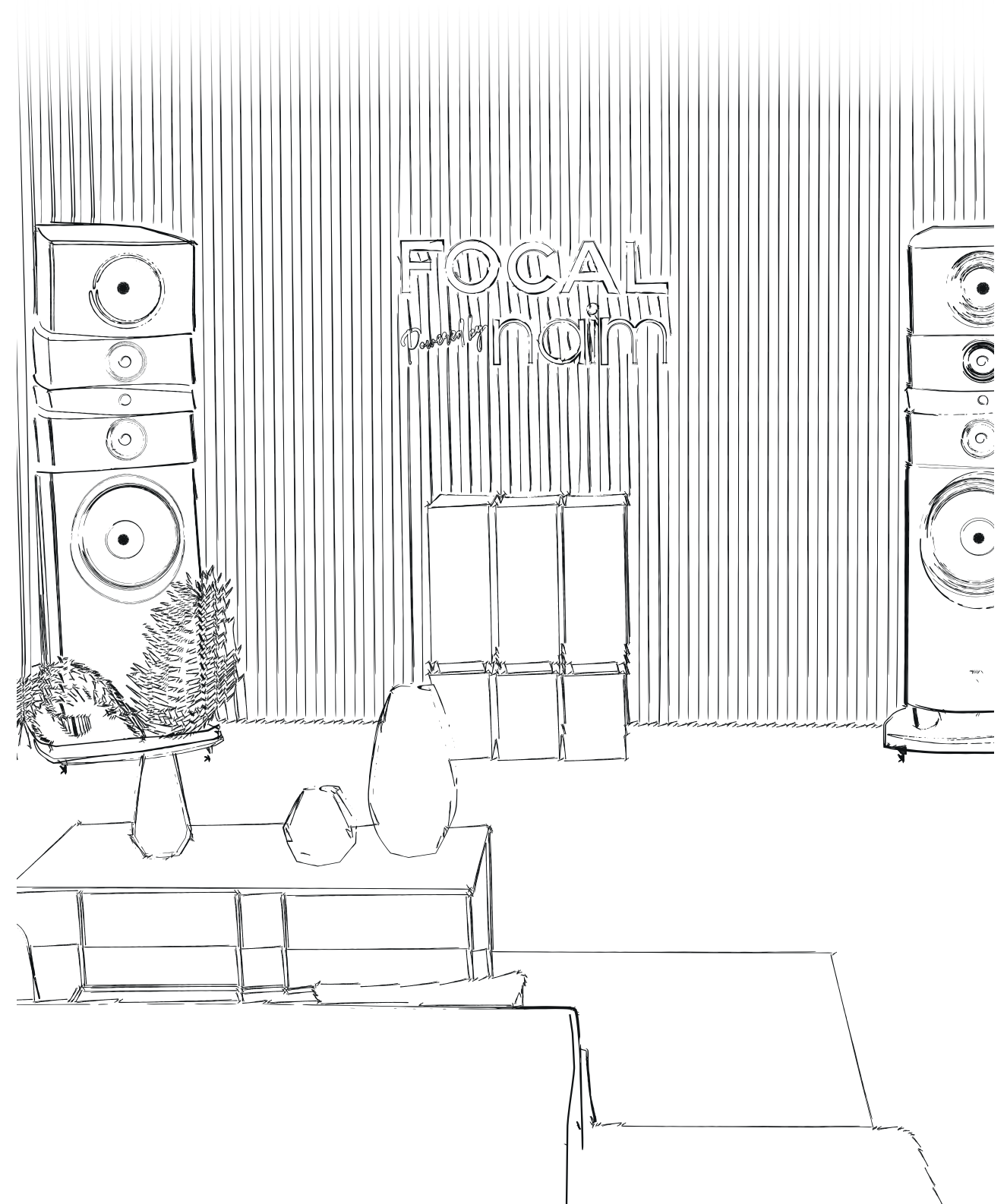
Cannes - Lyon
Perpignan
Berlin
Bad Schwartau
Sevenoaks
Norwich
Prague
Bucarest
Vilnius

CANADA

Barrie - Lethbridge
Saskatoon
Winnipeg

USA

Austin
Dallas - Houston
Scottsdale
Miami





For more information, scan the QR code
or find us at:

www.focal.com



Focal JMLab®

BP 374 - 108, rue de l'Avenir - 42353 La Talaudière cedex - France - +33 (0) 477 435 700

Focal® is a registered trademark of Focal JMLab®. Non-binding pictures. Pictures : L'Atelier Sylvain Madelon / Envato Elements.
Due to constant technological advances, Focal JMLab® reserves the right to modify prices and specifications without notice. SCAA/06/02/2023 - v7

